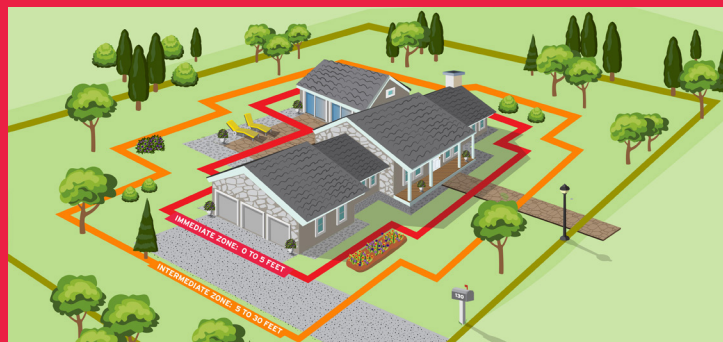


# HOW TO PREPARE YOUR HOME FOR WILDFIRES

WILDFIRE RISK REDUCTION STEPS THAT CAN MAKE YOUR HOME SAFER DURING A WILDFIRE



## ■ VEGETATION MANAGEMENT

### 1. HOME IGNITION ZONES

To increase your home's chance of surviving a wildfire, choose fire-resistant building materials and limit the amount of flammable vegetation in the three home ignition zones. The zones include the **Immediate Zone**: (0 to 5 feet around the house), the **Intermediate Zone** (5 to 30 feet), and the **Extended Zone** (30 to 100 feet).

### 2. LANDSCAPING AND MAINTENANCE

To reduce ember ignitions and fire spread, trim branches that overhang the home, porch, and deck and prune branches of large trees up to 6 to 10 feet (depending on their height) from the ground. Remove plants containing resins, oils, and waxes. Use crushed stone or gravel instead of flammable mulches in the **Immediate Zone** (0 to 5 feet around the house). Keep your landscape in good condition.

## ■ FIRE RESISTIVE CONSTRUCTION

### 3. ROOFING AND VENTS

Class A fire-rated roofing products, such as composite shingles, metal, concrete, and clay tiles, offer the best protection. Inspect shingles or roof tiles and replace or repair those that are loose or missing to prevent ember penetration. Box in eaves, but provide ventilation to prevent condensation and mildew. Roof and attic vents should be screened to prevent ember entry.

### 4. DECKS AND PORCHES

Never store flammable materials underneath decks or porches. Remove dead vegetation and debris from under decks and porches and between deck board joints.

### 5. SIDING AND WINDOWS

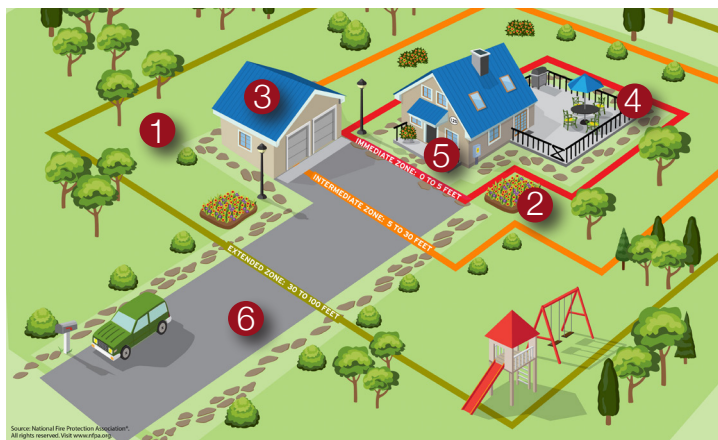
Embers can collect in small nooks and crannies and ignite combustible materials; radiant heat from flames can crack windows. Use fire-resistant siding such as brick, fiber-cement, plaster, or stucco, and use dual-pane tempered glass windows.

## ■ BE PREPARED

### 6. EMERGENCY RESPONDER ACCESS

Ensure your home and neighborhood have legible and clearly marked street names and numbers. Driveways should be at least 12 feet wide with a vertical clearance of 15 feet for emergency vehicle access.

- Develop, discuss, and practice an emergency action plan with everyone in your home. Include details for handling pets, large animals, and livestock.
- Know two ways out of your neighborhood and have a predesignated meeting place.
- Always evacuate if you feel it's unsafe to stay—don't wait to receive an emergency notification if you feel threatened from the fire.
- Conduct an annual insurance policy checkup to adjust for local building costs, codes, and new renovations.
- Create or update a home inventory to help settle claims faster.



**TALK TO YOUR LOCAL FORESTRY AGENCY  
OR FIRE DEPARTMENT TO LEARN MORE  
ABOUT THE SPECIFIC WILDFIRE RISK  
WHERE YOU LIVE.**

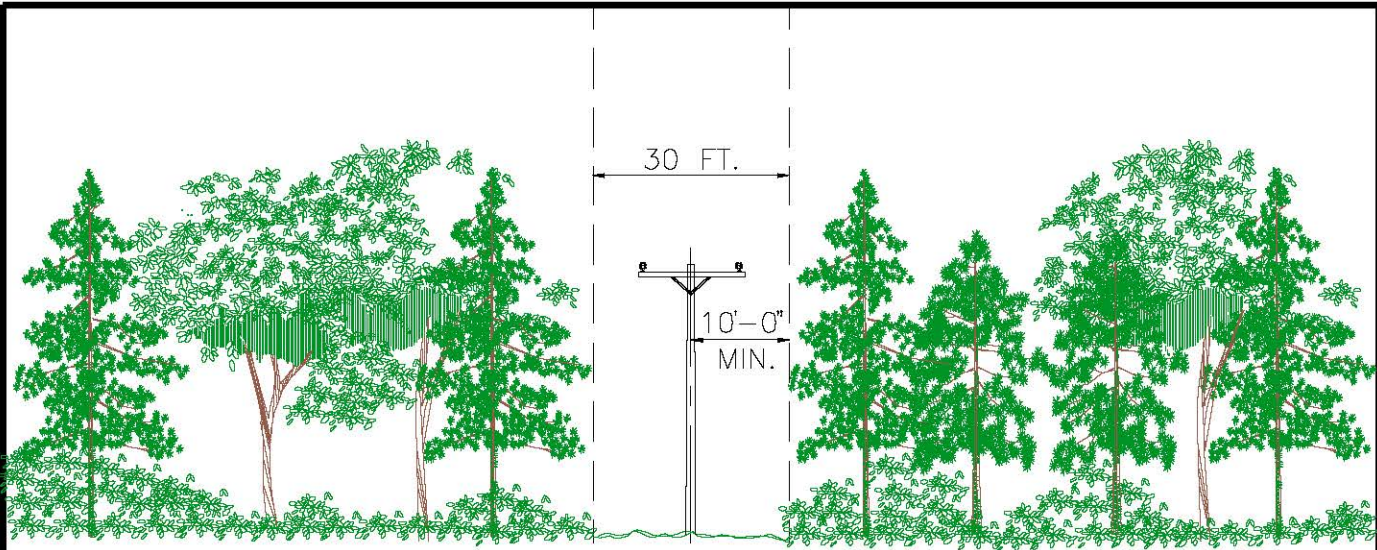


**FIREWISE USA®**  
RESIDENTS REDUCING WILDFIRE RISKS

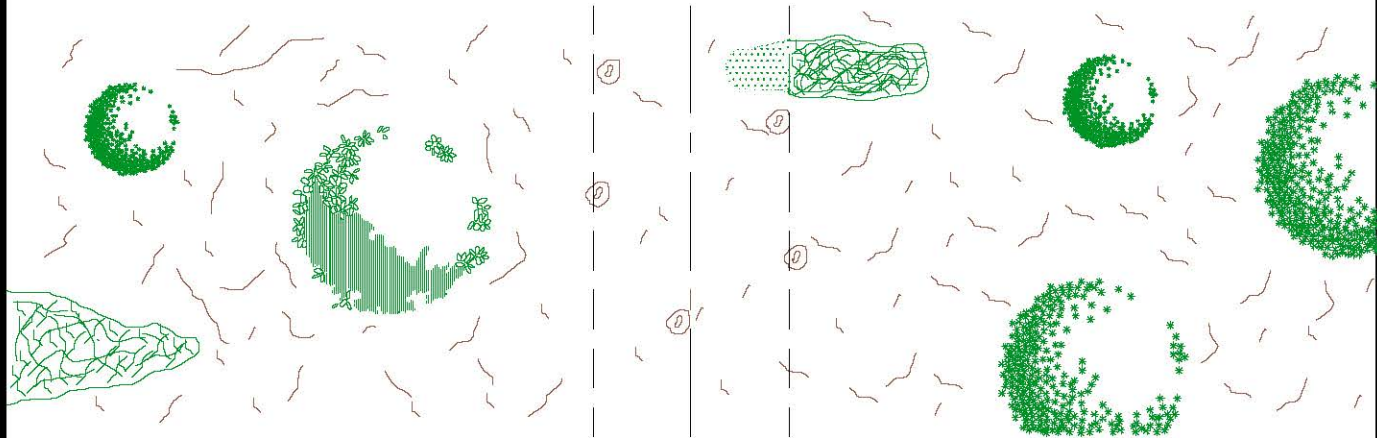
VISIT [FIREWISE.ORG](https://www.firewise.org) FOR MORE DETAILS

Firewise® is a program of the National Fire Protection Association. This publication was produced in cooperation with the USDA Forest Service, US Department of the Interior, and the National Association of State Foresters. NFPA is an equal opportunity provider. Firewise® and Firewise USA® are registered trademarks of the National Fire Protection Association, Quincy, MA 02169.

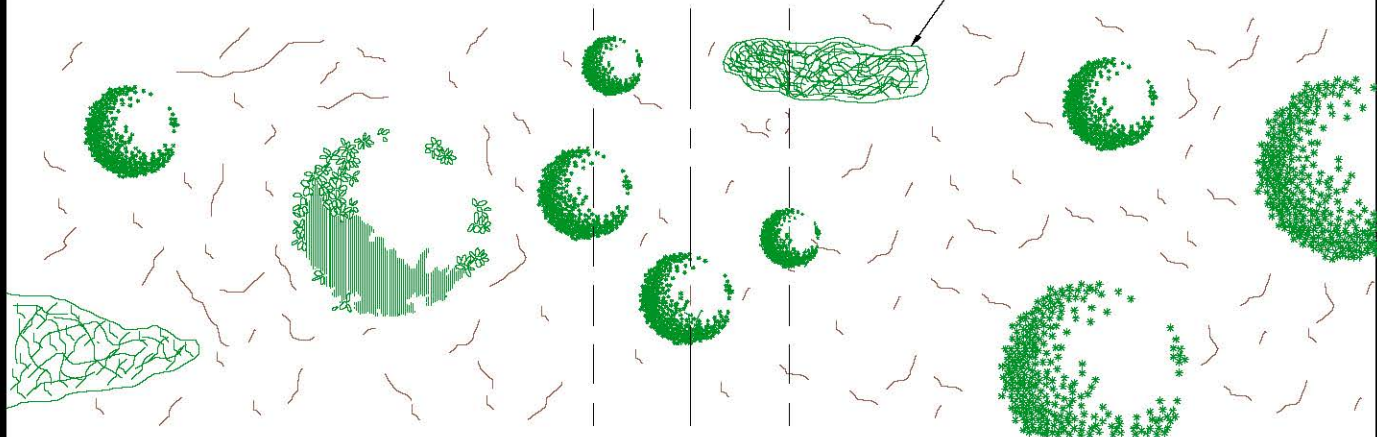
Order a Reducing Wildfire Risks in the Home Ignition Zone checklist/poster at [Firewise.org](https://www.firewise.org)



ELEVATION



AFTER CLEARING



BEFORE CLEARING

NOTE:  
 Change suffix of drawing number to designate clearing width. (e.g. M1.30G specifies 30 foot wide clearing).

RIGHT-OF-WAY CLEARING GUIDE

DEC 1998  
 RUS

M1.30G